



PRIMER

Inverter

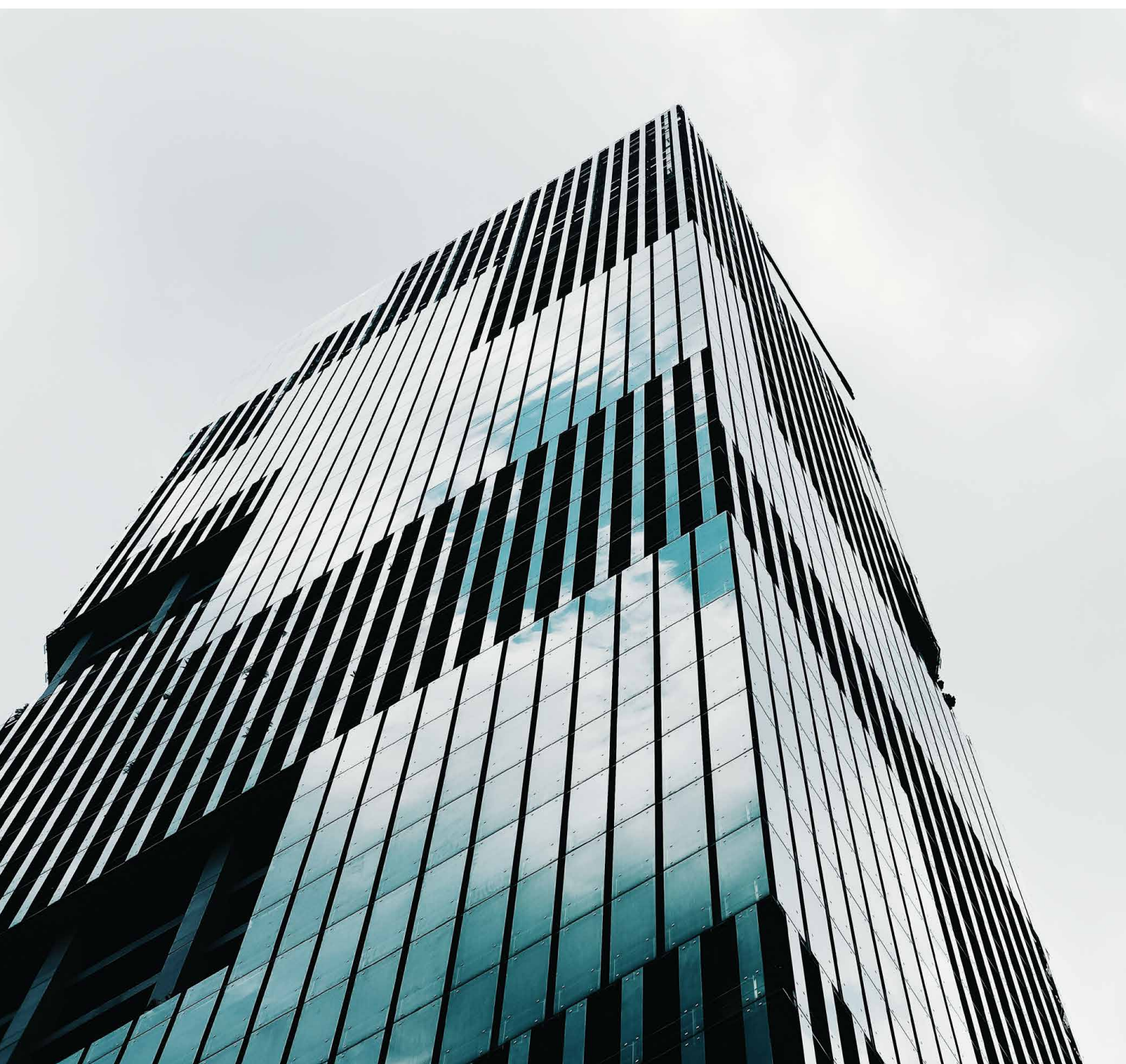
HIGH EFFICIENCY INVERTER

Split System 5-10 Tons DC Motor AHU

Light Commercial

TYH/TYK/TYA R32/R410A Series 50Hz

TRANE
TECHNOLOGIES

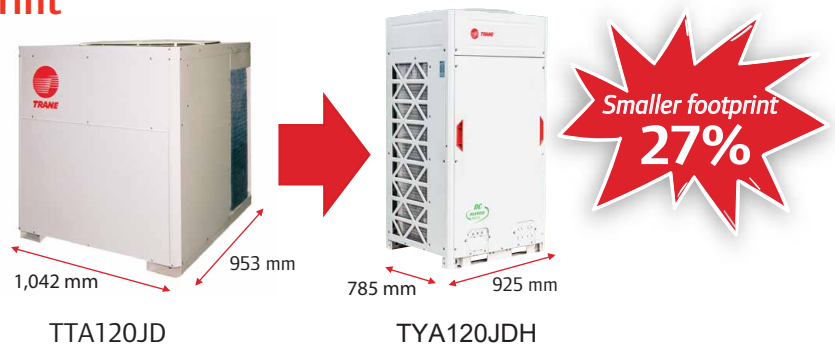


High Energy Efficiency System

- The introduction of a high efficiency DC Inverter compressor driven by the most advanced control technology is designed to provide more precise operation and improved system efficiency to reach maximum SEER 18.0 (averagely improved 60% from Fixed speed type). The compressor speed is adapted to match the fluctuating cooling load of the buildings while ensuring the appropriate variable supply of cooling.

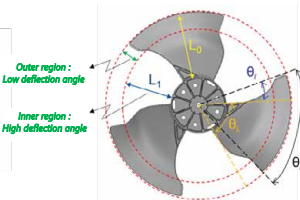
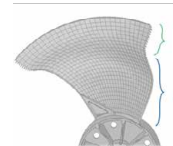
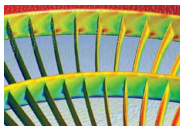
Space Saving with Smaller Footprint

- Trane PRIMER Inverter is designed for smaller condensing unit dimensions to save the installation space at maximum of 27% from current product.



Low Operation Sound Noise

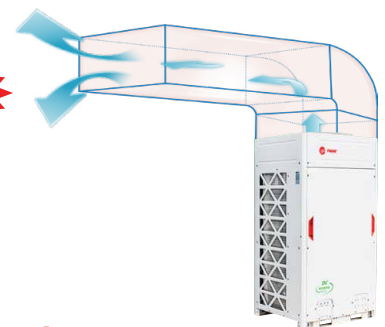
- Trane PRIMER Inverter optimally designed fan shape, new designed discharge air grille and air deflector together supply higher air volume and lower operation sound.



External Static Pressure of Outdoor Units Up to 40Pa

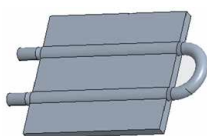
- DC fan motor can enhance External Static Pressure of the outdoor fan. Be adjustable up to maximum 40 Pa which can apply discharge duct for hot air to avoid obstruction in front of the outdoor unit.

40Pa

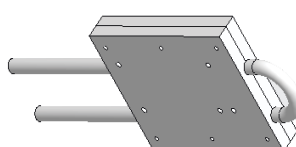


High Reliability with New Refrigerant Cooled PCB Technology

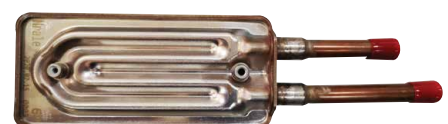
- New full package for top discharge and Micro Channel Radiator for side discharge design to enhance heat transfer area and decrease temperature by 15°C.



Old : Crimping



New for Top : Full Package

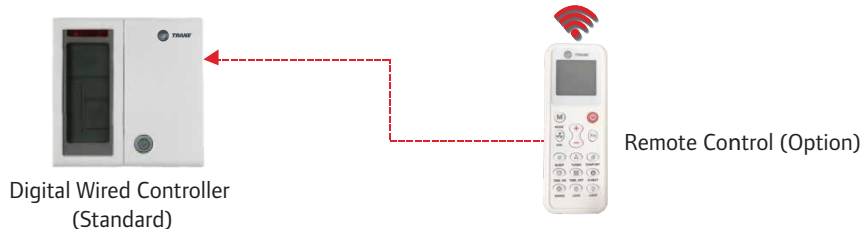


New for Side : Micro Channel Radiator

Easy service and maintenance

- Self - Diagnostic system shows error codes for the causes of malfunction which help reduce service time.

Digital Wired Control Standard



Weekly Schedule Wired Controller TM-AT0BR (Optional)



TYH Air Handling Unit

- For horizontal air discharge.
- Powder paint finished casing.
- Direct drive with DC motor.
- Electronic Expansion Valve.
- Factory installed PCB and display wired controller.
- Suitable for free blow application.



TYK/TYA Condensing Unit

- Powder paint finished casing.
- External current overload for compressor, Hi/Low pressure, temperature protection, phase protection (Missing phase/Phase loss/Under and Over voltage protection).
- Fully charged refrigerant with shut-off valve.



Product Specifications

UNIT MODELS	Indoor unit		TYH060QBH	TYH120NBH
	Outdoor unit		TYKF60TDH	TYA120JDH
Performance Data	Cooling Capacity (Min-Max)	Btu/h	60,000 (30,000-65,000)	120,000 (50,000-126,000)
	SEER	Btu/h/W	18	18
	Nominal Airflow	CFM	2,000	4,000
System Data	Refrigerant Type		R32 (Fully charged)	R410A (Fully charged)
	No. of Refrigerant Circuits		1	1
	Refrigerant Connection Type		BRAZE	BRAZE
	Suction Line OD	in (mm)	3/4"	1 1/8"
	Liquid Line OD	in (mm)	3/8"	1/2"
	Drain Connection Size	in (mm)	1 (25.4)	1 (25.4)
	Drain Connection Type		Steel Pipe - MPT	
Indoor Units				
Electrical Data	Power Supply	V/Ph/Hz	220-240/1/50	
Flow Control	Type		Electronics Expansion Valve	
Fan	Fan Type		DOUBLE INLET CENTRIFUGAL WITH FORWARD CURVED WHEEL	
	Qty		2	2
	Drive Type		Direct Drive	
Fan Motor	Type		DC Motor	
	Output	kW	0.56	0.55
	Qty x RLA	A	2.54	2x3.81
Air Filter	Type		1-In Washable Aluminium Air Filter	
Dimension (HxWxD)	Unit (Net)	mm	430x1,454x769	620x1,889x916
Weight	Unit (Net)	kg	65	143
Outdoor Units				
Electrical Data	Power Supply	V/Ph/Hz	380-415/3/50	
Compressor	Type		Twin Rotary DC Inverter	
	Qty x RLA		9.8	20.25
Fan	Type		Propeller	
	Hot Air Discharge Direction		Horizontal (Front)	Vertical (Top)
	Qty		1	1
Fan Motor	Type		DC Motor	
	Output	Watt	250	750
	Qty x RLA	A	2.2	3.43
Dimension (HxWxD)	Unit (Net)	mm	998x940x340	1,720x925x785
Weight	Unit (Net)	kg	72	215

Note: 1. Capacity is rated at ARI conditions of 80 °FDB /67 °FWB for Indoor & 95 ° FDB for Outdoor.
2. Outdoor unit dimensions depth is not included the dimensions of unit's legs.
3. Product design and specification are subject to change without notice.



Insu (ประเทศไทย)
เลขที่ 1126/2 ชั้น 30 อาคารวาณิช 2 ถนนเพชรบุรีตัดใหม่ แขวงมักกะสัน เขตราชเทวี กรุงเทพฯ 10400
☎ 0-2761-1111

