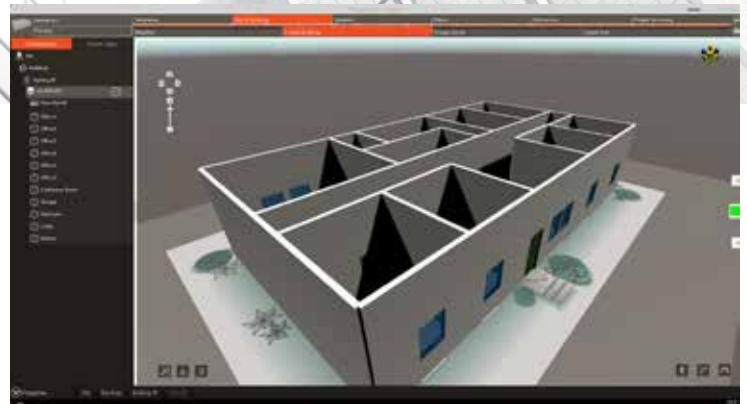




Trane TRACE 3D Plus Software



Trane continues to push the energy modeling industry forward with the new **TRACE™ 3D Plus software**. With a completely redesigned, dynamically visual interface coupled with the power and credibility of the Department of Energy's EnergyPlus™ calculation engine, this reinvented platform answers the demands of architects and engineers for a more integrated and visual workflow.



Features

- Intuitive, easy-to-use dynamic user interface features drag and drop components and 2D or 3D visual model validation.
- Expanded and rebuilt library of modeling data now includes full building themes.
- Integration with the Trane Official Product Selection System (TOPSS™) software provides increased accuracy and speed.
- Built-in renewable energy sources provide the ability to model the most advanced systems.
- Complete load design capabilities seamlessly merge to eliminate duplicate data entry and streamline workflow.

Benefits

- Enhanced workflow and the latest integrations minimize modeling time and cost during all stages of the project.
- Updated library data and the ability to import TOPSS™ equipment selections ensures accurate, comprehensive analysis to help make sound HVAC system decisions from conceptual design to as-built performance.
- With the Trane C.D.S. world-class support portal, which includes screen sharing, a knowledge center, online ticketing and tracking, HVAC designers have access to assistance whenever they need it.
- Trane systems expertise combined with the Department of Energy's EnergyPlus™ globally recognized calculation engine provides the most comprehensive energy modeling software in the HVAC industry.

Trane® TRACE™ 3D Plus will be launched in 2017.

More information will be available at that time.