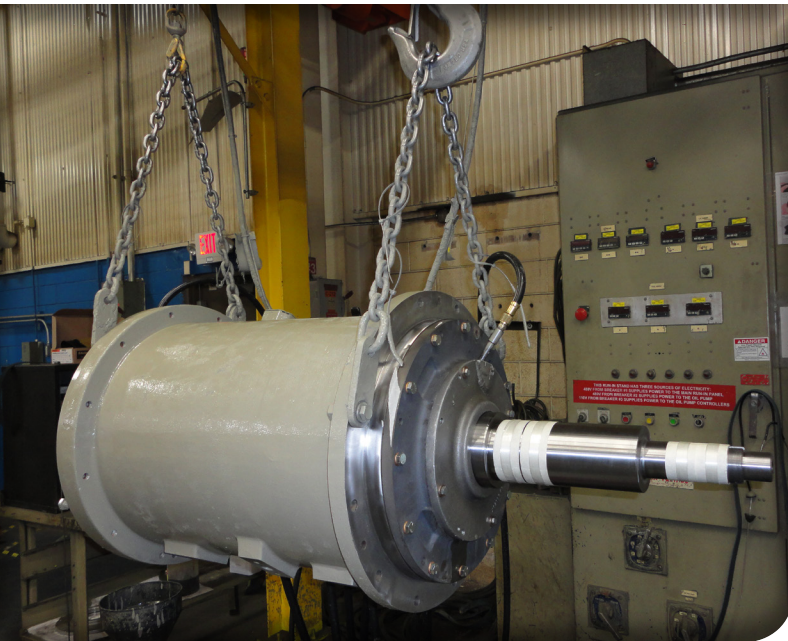


OEM Advantage

Remanufactured Motors

Remanufactured motors



Trane CenTraVac™ remanufactured motors are the best option for your chiller because...

Trane has been remanufacturing CenTraVac motors since 1974. Thousands of motors have been remanufactured at the 230,000 square foot facility in Charlotte, NC—the largest OEM manufacturing facility in the HVAC industry.

Trane CenTraVac motors are remanufactured to meet the most current OEM standards from the industry leader in chiller manufacturing. Our remanufactured motors are backed by a standard 12-month warranty. Trane has done more extensive testing on the best practices for remanufacturing CenTraVac motors than any other company.

Continuous improvement, cutting-edge technology, and superior materials help Trane remanufactured CenTraVac™ motors stand out above the rest.

Quality

Trane takes aggressive steps to ensure top quality for our remanufactured CenTraVac motors. Extensive research has been done to establish the most efficient remanufacturing process while delivering the highest quality to our customers. Over 22,000 tests have been done to identify appropriate materials for wire insulation, terminal board insulation, motor varnish, gaskets, and O-rings. These tests include chemical analysis, destructive analysis, and accelerated life-cycle analysis.

When motors arrive at the factory, they are disassembled. Components are cleaned, inspected, and tested. This process determines if parts need to be repaired or replaced. All wear-sensitive materials are replaced.

All Trane remanufactured CenTraVac motors must then pass a rigorous battery of tests. While most manufacturers test their motors at 2,000 volts, all Trane low-voltage motors are subjected to a 5,000 volt surge test. This test verifies the motor's electrical integrity, ensures trouble-free operation, and helps eliminate costly downtime. In addition, an extensive rotor testing process, unique to Trane, tests the electrical integrity of each individual rotor bar, detecting open rotor bars, porous end rings, and other inconsistencies that can lead to rotor failures. These measures ensure that you receive the quality that you expect from Trane.

Warranty

All Trane remanufactured CenTraVac motors come with standard 12-month parts warranties. Additional extended warranties are available for purchase. These include first-year labor warranties and second- through-fifth year parts warranties.

Unit models and motor types available

Unit models	Motor types
CV	RVX
CVHB	RVX
CVHE	DRV, RELIANCE®, RAM
CVHF/CDHF	RELIANCE, RAM
CVHG/CDHG	RELIANCE, RAM

Stocked motors available

Trane maintains a stock of the most frequently requested motors, reducing lead times and downtime in emergency situations.

Frame sizes
36B111
40B141
40B150
44B552
44B557
DRV51940
K1313-25
K1313-45
K1365-85
K1568-25
K1568-35
K1568-45
K1568-55
K1574-15
K1580-15
K1659-15
K1661-35
K1661-45

Please note: the availability of stock motors is based on current inventory. Call 800-837-7580 or email CLT_MFG_Customer_Services@irco.com to find out which motors are currently in stock.

Trane remanufacturing process:

Disassemble and inspect motors

- Disassemble and visually inspect all returned motors

Clean components

- Ultrasonically degrease
- Vibratory surface conditioning/burnishing
- Thermally grease and burn off oil
- Shot blast
- Bath in heated detergent and rust inhibitor

Qualify components

- Visually inspect parts
- Check mechanical elements
- Gauge using OEM specifications
- Surface conditioning
- Open rotor test
- Machine rotor/shaft assembly to OEM specifications
- Polish and balance all rotor/shaft assemblies

Rewind motor stators

- Complete stator prep, winding, assembly, and testing
- Perform high potential, surge, and winding resistance tests

Re-assemble motors

- Flexible final assembly line for quicker shipment

Test units

- Run test to verify mechanical and electrical operation
- Low-voltage units are subjected to a 5,000 volt surge test (industry standard is 2,000 volts)

Ship units

- Spray paint with industrial oil-based enamel
- Apply rust inhibitor to all exposed surfaces
- Wrap, box, and skid for shipping