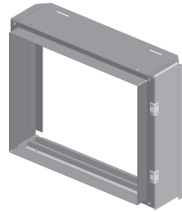




# Installation Instructions



## Ducted Filter Rack Water Source Heat Pumps

Model Number: GEH/V\* & EXH/V\*

January 2016

WSHP-SVN09B-EN  
© 2016 Trane All Rights Reserved



1

### Warnings, Cautions, and Notices

Read this manual thoroughly before operating or servicing this unit. Safety advisories appear throughout this manual as required. Your personal safety and the proper operation of this machine depend upon the strict observance of these precautions.

The three types of advisories are defined as follows:

**⚠ WARNING**

Indicates a potentially hazardous situation which, if not avoided, could result in death or serious injury.

**⚠ CAUTION**

Indicates a potentially hazardous situation which, if not avoided, could result in minor or moderate injury. It could also be used to alert

**NOTICE**

Indicates a situation that could result in equipment or property-damage only accidents.

### Important Environmental Concerns

Scientific research has shown that certain man-made chemicals can affect the earth's naturally occurring stratospheric ozone layer when released to the atmosphere. In particular, several of the identified chemicals that may affect the ozone layer are refrigerants that contain Chlorine, Fluorine and Carbon (CFCs) and those containing Hydrogen, Chlorine, Fluorine and Carbon (HCFCs). Not all refrigerants containing these compounds have the same potential impact to the environment. Trane advocates the responsible handling of all refrigerants-including industry replacements for CFCs such as HCFCs and HFCs.

### Important Responsible Refrigerant Practices

Trane believes that responsible refrigerant practices are important to the environment, our customers, and the air conditioning industry. All technicians who handle refrigerants must be certified. The Federal Clean Air Act (Section 608) sets forth the requirements for handling, reclaiming, recovering and recycling of certain refrigerants and the equipment that is used in these service procedures. In addition, some states or municipalities may have additional requirements that must also be adhered to for responsible management of refrigerants. Know the applicable laws and follow them.

2

**⚠ WARNING**

**Proper Field Wiring and Grounding Required!**  
Failure to follow code could result in death or serious injury. All field wiring MUST be performed by qualified personnel. Improperly installed and grounded field wiring poses FIRE and ELECTROCUTION hazards. To avoid these hazards, you MUST follow requirements for field wiring installation and grounding as described in NEC and your local/state electrical codes.

**⚠ WARNING**

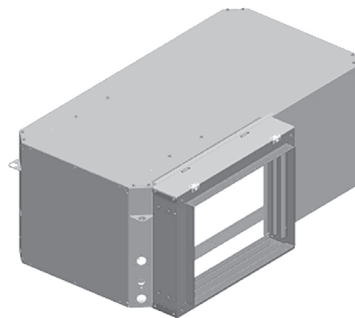
**Personal Protective Equipment Required!**  
Installing/servicing this unit could result in exposure to electrical, mechanical and chemical hazards. Before installing/servicing this unit, technicians MUST put on all Personal Protective Equipment (PPE) recommended for the work being undertaken. ALWAYS refer to appropriate MSDS sheets and OSHA guidelines for proper PPE. When working with or around hazardous chemicals, ALWAYS refer to the appropriate MSDS sheets and OSHA guidelines for information on allowable personal exposure levels, proper respiratory protection and handling recommendations. If there is a risk of arc or flash, technicians MUST put on all necessary Personal Protective Equipment (PPE) in accordance with NFPA70E for arc/flash protection PRIOR to servicing the unit. Failure to follow recommendations could result in death or serious injury.

3

### Installation

#### Horizontal units (filter rack can have top, bottom or side accessibility)

Figure 1. Right return, back supply ducted filter rack



**Note:** Filter rack shown is accessible from top of the unit.

1. Rotate the filter rack as needed to the required application (right or left hand return, right or left or top or bottom access) as shown in Figure 1.
2. Filter racks are to be installed on the side of the unit. Slide top flange over the top of cabinet and bottom flange below the bottom of the cabinet.
3. Line the top/bottom holes with the filter rack top and bottom slots; refer to Figure 1.
4. Attach filter rack to cabinet using # 10-16 x 3/8" screws. These screws are provided with the unit.
5. Slide the filter provided with the unit into the filter rack (through the guide rails).

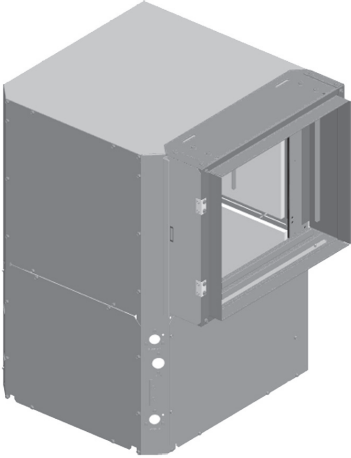
**Note:** GEH 006-060 and EXH 018-070 units ship with a filter. This same filter can be utilized in the ducted filter rack.

4

- Close the filter rack access door and make sure the door magnet latches the door shut. This will prevent air from bypassing the filter and getting into the unit.
- Once the filter rack is installed, seal the filter rack to the unit with duct tape or apply caulk. This will cover any gaps or notches (to clear screw heads).

### Vertical Units (side access only)

**Figure 2. Right return, back supply ducted filter rack**



**Note:** Filter rack shown is accessible from front of unit (right or left hand access).

**Note:** Vertical filter racks are built to the specified return and access side on GEV/EXV sizes 006, 009, 012, 015, 018, 024, 024, 030, 040, 048 & 060

5

and EXV 070. GEV sizes 036 & 042 can be rotated for the appropriate side and access side.

- Remove the existing filter rack rails from the unit and re-use the screws to attach the filter rack to the unit. See [Figure 2](#).
- Filter racks are to be installed on side of unit. Slide top flange over the top of cabinet and bottom flange on the face of the cabinet. Unit sizes 036 & 042 have top and bottom flange mount to the face of the cabinet.
- Line the top/bottom holes with the filter rack top and bottom slots; refer to [Figure 2](#).
- Attach filter rack to cabinet using # 10-16 x 3/8" screws provided with the unit.
- Slide the filter provided with the unit into the filter rack (through the guide rails).

**Note:** GEV 006, 009, 012, 015, 036, 042 & EXV 036, 042 & 070 units ship with a filter. This same filter can be utilized in the ducted filter rack.

**Note:** GEV 018, 024, 030, 032, 040 and EXV 018 and 024 units ship with a filter. The ship-with filter is not compatible with the ducted filter rack. A 20x20 standard filter should be purchased separately for the ducted filter rack.

**Note:** GEV 048, 060 and EXV 042, 048 and 060 units ship with a filter. The ship-with filter is not compatible with the ducted filter rack. A 24x30 standard filter should be purchased separately for the ducted filter rack.

- Close the filter rack access door and make sure the door magnet latches the door shut. This will prevent air from bypassing the filter and getting into the unit.
- Once the filter rack is installed, seal the filter rack to the unit with duct tape or apply caulk. This will cover any gaps or notches (to clear screw heads).



Trane optimizes the performance of homes and buildings around the world. A business of Ingersoll Rand, the leader in creating and sustaining safe, comfortable and energy efficient environments, Trane offers a broad portfolio of advanced controls and HVAC systems, comprehensive building services, and parts. For more information, visit [www.IRCO.com](http://www.IRCO.com).

Trane has a policy of continuous product and product data improvement and reserves the right to change design and specifications without notice.